



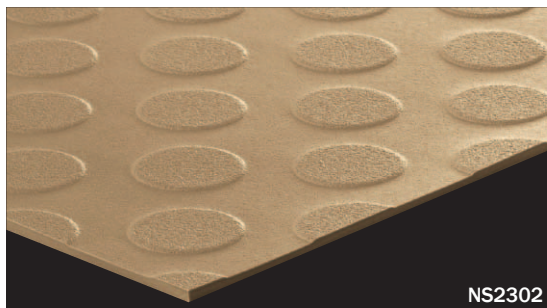
FLOORLEUM PLAIN EMOSS

Standard slip-resistant vinyl sheet
for indoor use with an excellent cost
performance.

category: slip-resistant vinyl sheet

Specification	overall thickness	2.0mm (salient)	width x length	1820mm x 18m
JIS Registered No.	No. GB0506143 (JIS A 5705 Vinyl Sheet Flooring)			
Packing	18m/roll			
Net Weight	97.2kg/roll			
Recommended Applications	slopes / corridors in school			
Recommended Adhesive from TOLI	dried mortar and concrete	Eco Royal Cement, Eco AR600		
	humid mortar and concrete	Epo Gray ST, US Cement, US Cement (less-smelly), US200		
	TOLI UNDERLAY SHEET	US Cement, US Cement (less-smelly), US200		
Welding	Welding rod for heat-welding is available on a color-by-color basis.			
Notes on Installation	<ul style="list-style-type: none"> ◆Seams should be heat-welded. ◆For one week after installation, direct sunlight, sudden change of temperature due to air conditioning, and water washing should be avoided. ◆In indoor applications, TOLI UNDERLAY SHEET (page 278) is also workable as the sub-floor. Please use the same adhesive for both upside and downside of UNDERLAY SHEET. In exterior or semi-exterior applications, do not use UNDERLAY SHEET. 			
Recommended Maintenance Wax from TOLI	New FB Wax, U Wax, T Wax (Non-shiny & Antibacterial) ◆Please apply the wax uniformly and thinly so that it will not be pooled in the dented part of surface embossing.			
Custom Order	<ul style="list-style-type: none"> ◆The standard colors from FLOORLEUM PLAIN (page 248) except FL2/31/33/37/41/49 can be also made to have the same embossing. For more information, please contact TOLI sales rep. ◆All the standard colors from ANTIBACTERIAL FLOORLEUM PLAIN (page 308) can be also made to have the same embossing. For more information, please contact TOLI sales rep. 			
Others	<ul style="list-style-type: none"> ◆FLOORLEUM PLAIN EMOSS is for indoor use. Do not install in exterior or semi-exterior places that are exposed to direct sunlight for a long time. ◆Please bear in mind that surface embossing cannot always match on the joints. ◆The dirt and stains will be more visible on the floor covering with lighter plain colors, compared to dark colors. Also they are more likely to stick with the deep-embossed surface than the flat surface. ◆Please be aware that some rubber casters might cause color-contamination. ◆Please note that the product has the indigenous odor from its materials. 			

MADE IN JAPAN



NS2302



NS2331



NS2341



NS2302



NS2337

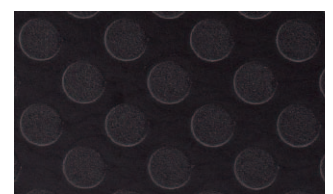
◆ Slip Resistance

<in accordance with JIS A 1454 (OY-PULL method), rubber shoes>

	C.S.R. value	
	dry	wet and dusty
2.0mm vinyl sheet	0.84	0.46
FLOORLEUM PLAIN EMOSS	0.71	0.50



NS2333



NS2349