

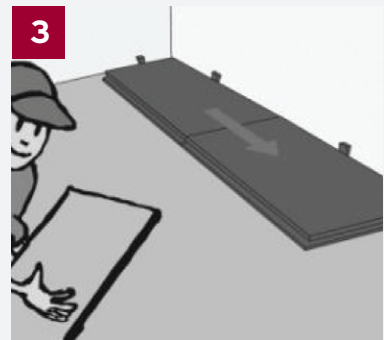
Floover flooring installation and maintenance



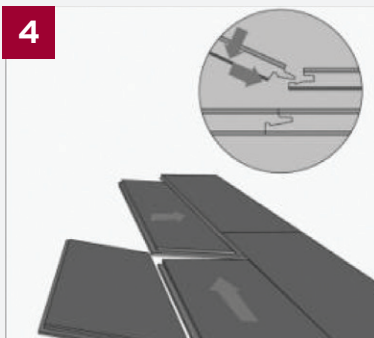
1
The floor must be levelled not over 2 mm



2
Lay the Floover film on the ground and seal with a masking tape to ensure the vapour barrier.



3
Install the first row following the direction of the sun Light, respecting the 12mm gap with all the walls and elements. Join the plank with Unilin clic system.



4
Install the following rows introducing the short side with 45° and laying on the floor with low pressure.



5
Once you have put together the short side, put together the pieces laterally with a 45° movement, until you see/hear the clic has closed.



6
Knock gently with a hammer to help lock the pieces together.

BEFORE INSTALLATION

- Before, during and after the installation, the room must be preserved in the ambient conditions delineated in the "air-conditioning".
- Before the installation, check that the product was not damaged during transportation.
- Damaged material will be not replaced once installed.
- Some differences of colour and structure are due to the nature of the material and so they can not be an object of a claim.
- As with all natural products once exposed to sunlight there is a possibility that there will be some minor alteration in the colour.
- Also once the product is subjected to extreme ambient conditions of temperature and/or humidity some modifications of the dimensions of the board can occur between 5% and 8%. Immediately after installation, and before fitting of the skirting, clean the floor with a damp cloth.
- For the first cleaning please use special maintenance cleaner for PVC. Depending on level of use the flooring must be cleaned at regular intervals with topic cleaner.
- Surface base: All the surfaces where product has to be fitted, must be predisposed to the laying, following principles in respect of the actual normative, in particular the requisites will be:

1. Dry and without humidity
2. Level (with differences of level of 3 mm for one meter at least)
3. Compact and resistant Massetto.
4. Do not fix anchorages with nails, screws or glues
5. Assure a stagger of the board not inferior of 300 mm
6. Maintain a distance of 10 mm from all the fixed structural works at the edge of the perimeter
7. In the areas, doors, passages or surfaces bigger than 200 m² and also in the length and/or width superior to 18 m, you have to consider the joints.
8. Your seller can suggest to you a large range of accessories available.

Floover flooring installation and maintenance



AIR-CONDITIONING

- The FLOOVER flooring must be conserved in the temperature of the environment in which it will be laid for 48 hours before the fitting. The ideal conditions are 20°/22°C of temperature and 50- 60% of humidity. Open the packs only when you install the flooring and mix the boards of the different boxes.

FUNDAMENTAL NORM FOR THE INSTALLATION

- On the whole area where the installation has to be done, you have to lay on the surface a PE film of 0.2 mm thickness which acts as a "Barrier of Vapour" function.
- The joints of the different PE film sheets must be placed upon each other for 20 cm at least.
- The flooring must always be fitted in a floating way, so without glue to the below surface.
- The Floover flooring is ideal for every type of habitat with exception of the high humid sites.
- This floating product is the ideal flooring for environments of residential and commercial use, exception in those environments that have a high humidity. This flooring shows different features: it's elastic, insulating in the thermic and acoustic point of view and it's easy to maintain. It's also resistant and simple to install. The Floover flooring has got a click system without glue and you can remove it in any moment without any damage and then you can re-install it following the initial instructions.

THE INSTALLATION

- For the beginning it's necessary to have: the adhesive tape and the polyethylene film that is important as insulating against the vapour. The essential tools are: metre, pencil, saw, hammer, sealing, level, spacers.
- After having lined up the first line of boards, lay the second line using the remaining piece of the last board of the previous line.
- The joints of the boards between two different lines, must be offset of 20 cm at least.

Install the first board lightly in diagonal as indicated and fix it, balance it lightly.

- Proceed in the same way with the second board and position the frontal part of this last one against the first one.
- Cut the board, necessary to complete the first line, in the part that expands on the surface to cover. Joint the boards laterally with a movement of 45° until to heard the click of closing and line up using the spacers.
- The distance from the wall and from all the stable elements must be of 10 mm at least. (minimum 1,5 mm for every metre of width in the larger room).
- You have to remove the spacers after the complete laying of the flooring.
- The boards must be positioned in longitudinal way as regards to the light.
- Cut the profiles of the doors at the high of the flooring, installation of the last line of the boards: measure the remaining distance between the wall and the last line.

Cut the boards in the length. Cut and lay them.

AFTER THE LAYING

Apply the felt pads under the tables, chairs etc...When you move heavy furniture, lift them and do not trail them. The office chairs must have rubber wheels in respect of the norms.

Skirting, profiles, repairing tools and detergents are very important accessories. Your retailer can suggest and show you a large range of accessories available.

CLEANING AND MAINTENANCE

- Clean the flooring with a humid cloth only after the fitting, and before the fitting of the skirting. For the first cleaning please use special maintenance cleaner for PVC. Depending on level of use the flooring must be cleaned at regular intervals with topic cleaner, never wet but humid and well squeezed.
- The duration of your FLOOVER flooring doesn't depend only on the use, but also from the maintenance and cleaning. Use only suitable products and follow our indications. Do not use aggressive essences with glycerine because they can attack the surface.

FLOORING HEATING

- It is possible to install Floover with an underfloor heating system. Before installation it is necessary to have the heating system working at 25 - 30 °c for 10 days before installation, to ensure that any humidity which may be present has been dried.
- Once Floover has been installed, put on the heating system gradually, increasing the temperature 2-3°c daily until it reaches the maximum temperature. This maximum temperature has to be maintained for a minimum of one day for every cm of the thickness of the subfloor and maintain for the whole night.
- You must then continue to decrease the temperature 2-3°c everyday until the temperature of the flooring reaches 15°c (this should take approx. 10 days)

* Any doubt please consult legislation UNE56810