



# ALTGLAN <GX-3800>

With its delicate texture and deep coloration like velvet, ALTGLAN can create a high-end atmosphere.

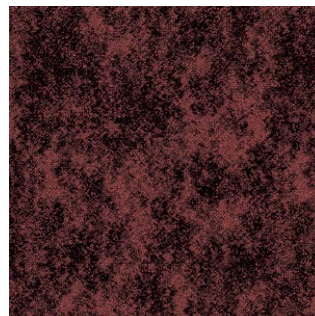
category: carpet tile

|                                |  |  |  |                                |   |
|--------------------------------|--|--|--|--------------------------------|---|
| Composition                    | surface  | BCF Nylon 100%   |  | dyeing method of yarn          | Piece Dyed                                      |
|                                | base fabric  | Nonwoven Polyester   |  | backing                        | PVC and Glass Fiber<br>(Recycled PVC contained) |
| Specification                  | size   | 500mm×500mm  |  | overall thickness              | 8.5mm   |
|                                | pile height  | H 5.5mm / M 4.0mm/ L 3.0mm (textured loop pile : tip sheared)                    |  |                                |   |
|                                | gauge  | 1/10   | stitch   | 11.5                           | yarn weight (oz/sq.yd)                          |
| Packing                        | 16pcs/box = 4m <sup>2</sup> /box   |  |  |                                |   |
| Net Weight                     | 20.0kg/box   |  |  |                                |   |
| Performance                    | Critical Radiant Flux  | (ASTM E648)  | Class 2 Average CRF 0.22/cm <sup>2</sup> or higher |                                |   |
|                                | Smoke Density  | (ASTM E662)  | Less than 450                                      |                                |   |
|                                | Flame-retardant  | Fire Defense Law in Japan Authorized No.E2150027                                 |  |                                |   |
|                                | Antistatic   | Less than 1.0kv (JIS L 1021-16, at 23 degrees centigrade, 25%RH)                 |  |                                |   |
|                                | Stain-resistant  | Stain Release  |  |                                |   |
|                                | Formaldehyde Radiation   | F☆☆☆☆ Interior-fabrics Performance Evaluation Conference Certified No. J15-31023 |  |                                |   |
| Way of Installation            | Monolithic   |  | or   | Quarter Turn                   |   |
| Recommended Adhesive from TOLI | TOLI ECO GA Cement   |  | (required quantity)                                | for steel or plastic sub-floor | 40 to 60 gram/m <sup>2</sup>                    |
|                                |  |  |  | for mortar and wood sub-floor  | 60 to 100 gram/m <sup>2</sup>                   |
| Notes on Installation          | Apply the adhesive on the whole surface of the sub-floor thinly and evenly. After drying, when the adhesive becomes translucent, install the tiles. Be careful not to put the tiles too tightly.   |  |  |                                |   |
| Others                         | <ul style="list-style-type: none"> <li>◆The color shading differs on a tile-by-tile basis. In case you do not feel comfortable about the floor after installation, please change the tiles partly so that it will look natural.</li> <li>◆Occasionally the direction of tip sheared piles are partly broken in part, which looks like color shading. This is one of the characteristics of tip sheared carpets and not a manufacturing defect.</li> <li>◆Please note that the product has the indigenous odor from its materials.</li> </ul> |  |  |                                |   |

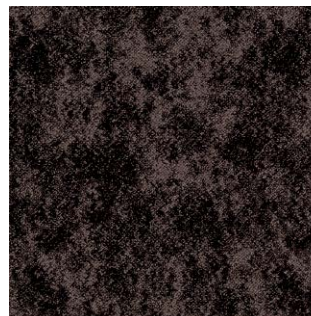
MADE IN JAPAN



|| GX3802



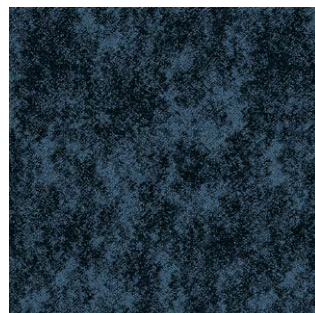
|| GX3803



|| GX3804



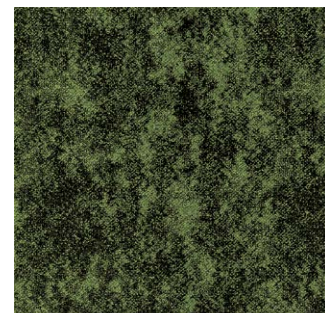
|| GX3805



|| GX3806



|| GX3807



|| GX3801





# ALTGLAN <GX-3800>

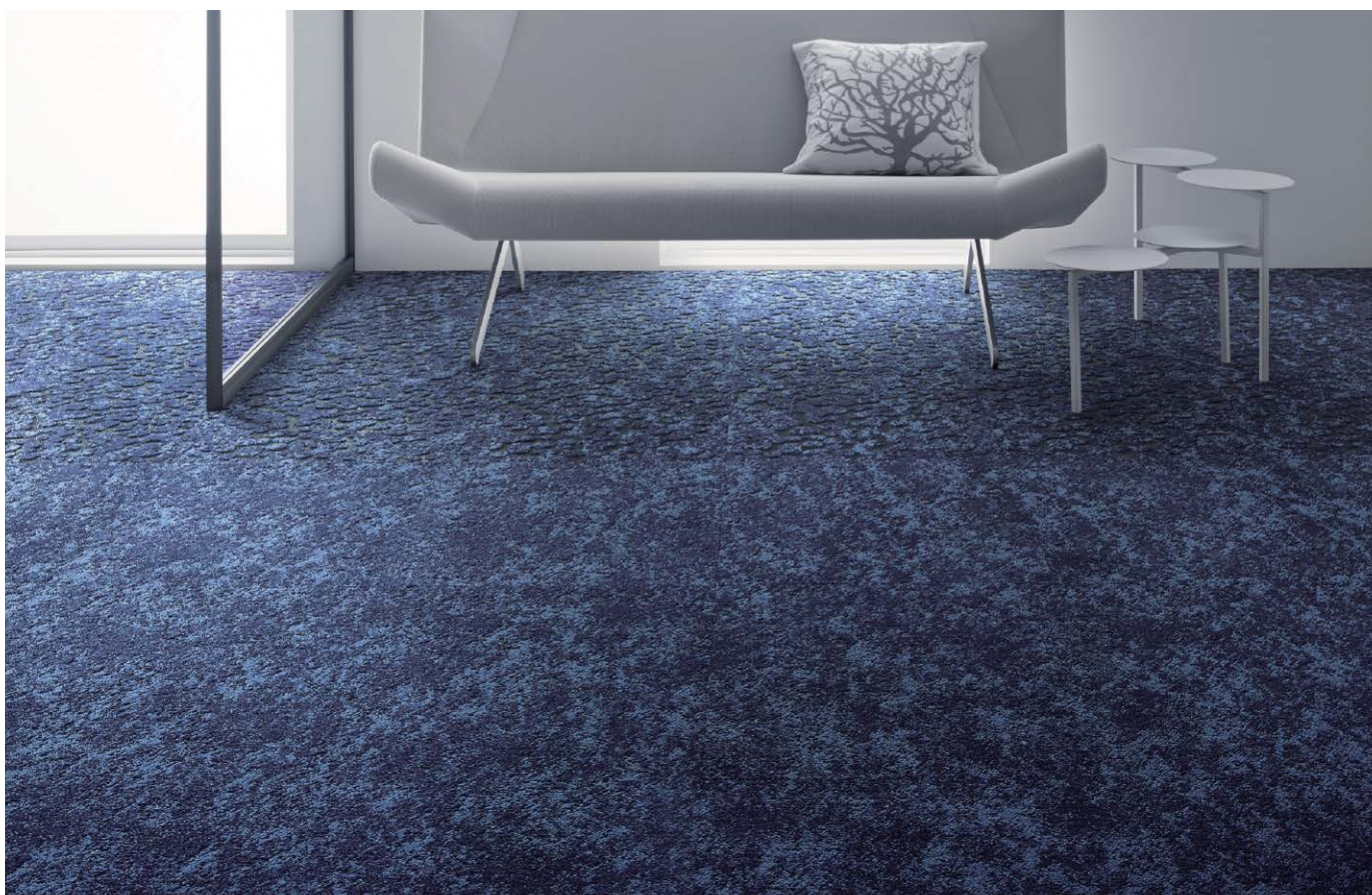
category: carpet tile



Carpet  
Tile



▲ GX3801/GX3802/GX3803/GX3804



▲ GX3806/MT3816F (MT-3800 - page 155)