



GOOD DESIGN



# ETRICO <GX-8600>

category: carpet tile

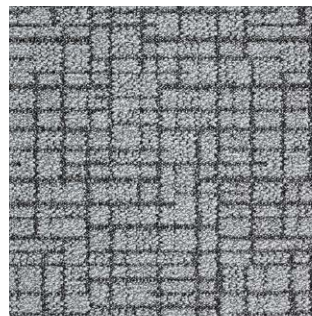
With its fine mixture of colored yarns as well as its soft texture of big loop piles, ETRICO will convey the feeling of high-class woven fabric like tweed.

Composition	surface	BCF Nylon 100%	dyeing method of yarn	Solution Dyed	
	base fabric	Nonwoven Polyester	backing	PVC and Glass Fiber	
Specification	size	500mm×500mm	overall thickness	8.5mm	
	pile height	H 6.0mm / M 4.0mm / L 3.0mm (textured loop pile)			
	gauge	1/10	stitch	13.5	yarn weight (oz/sq.yd)
Packing	16pcs/box = 4m <sup>2</sup> /box				
Net Weight	18.4kg/box				
Performance	Critical Radiant Flux	(ASTM E648)	Class 1 Average CRF 0.45/cm <sup>2</sup> or higher		
	Smoke Density (flaming)	(ASTM E662)	Less than 450		
	Flame-retardant	Fire Defense Law in Japan Authorized No.E2160061			
	Antistatic	Less than 1.0kv (JIS L 1021-16, at 23 degrees centigrade, 25%RH)			
	Stain-resistant	Stain Release (NANO CLEAN)			
	Formaldehyde Radiation	F☆☆☆☆ Interior-fabrics Performance Evaluation Conference Certified No. J16-31181			
Way of Installation	Monolithic		or	Quarter Turn	
Recommended Adhesive from TOLI	TOLI ECO GA Cement	(required quantity)	for steel or plastic sub-floor	40 to 60 gram/m <sup>2</sup>	
			for mortar and wood sub-floor	60 to 100 gram/m <sup>2</sup>	
Notes on Installation	Right after installation, something like color-shading could be seen on the surface. This is caused by lying down of piles which will be recovered over time.				

MADE IN JAPAN



GX8601



GX8601



GX8603

## NANO CLEAN

“Nano Clean” provides more excellent stain resistance to soils by adding special Nano finish to the existing stain release by fluoridation.



GX8602



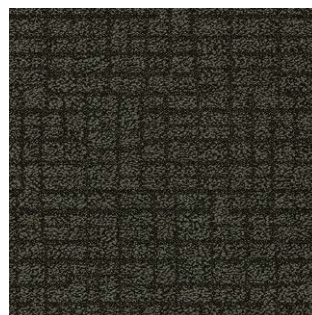
GX8604

**GX series**  
Comfortable Texture

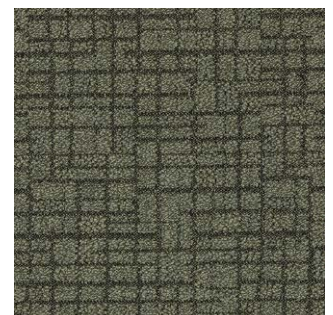
×

**Loose Lay Tile**  
Reliable Functions

Combination of GX series and Loose Lay Tile (NW-EX series) will create variety of interior spaces in versatile application.



GX8605



GX8606





GOOD DESIGN



# ETRICO <GX-8600>

category: carpet tile



Carpet Tile



▲ GX8601/GX8602



▲ GX8603/GX8604/TTN3105 (LL FREE 50 NW-EX - page 322)