

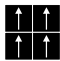
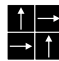


GA-3600 (texture II)

Natural design and texture inspired by the bark of trees are well described in beautiful earth color tones.

category: carpet tile

Carpet Tile

Composition	surface	BCF Nylon 100%	dyeing method of yarn	Solution Dyed	
	base fabric	Nonwoven Polyester	backing	PVC and Glass Fiber	
Specification	size	500mm x 500mm	overall thickness	6.8mm	
	pile height	H 4.5mm / L 3.0mm (textured loop pile)			
	gauge	1/10	stitch	12.5	yarn weight (oz/sq.yd)
Packing	16pcs/box = 4m ² /box				
Net Weight	19.2kg/box				
Performance	Critical Radiant Flux	(ASTM E648)	Class 2 Average CRF 0.22/cm ² or higher		
	Smoke Density	(ASTM E662)	Less than 450		
	Flame-retardant	Fire Defense Law in Japan Authorized No.E2120246			
	Antistatic	Less than 1.0kv (JIS L 1021-16, at 23 degrees centigrade, 25%RH)			
	Stain-resistant	Stain Release			
	Formaldehyde Radiation	F☆☆☆☆ Interior-fabrics Performance Evaluation Conference Certified No.J12-30849			
Way of Installation	 Monolithic or  Quarter Turn				
Recommended Adhesive from TOLI	TOLI ECO GA Cement	(required quantity)	for steel or plastic sub-floor	40 to 60 gram/m ²	
			for mortar and wood sub-floor	60 to 100 gram/m ²	
Notes on Installation	Apply the adhesive on the whole surface of the sub-floor thinly and evenly. After drying, when the adhesive becomes translucent, install the tiles. Be careful not to put the tiles too tightly.				
Others	◆To have a natural image after installation, stripes are intentionally inserted in the design at regular intervals, which is not a manufacturing defect. In case you do not feel comfortable about the floor after installation, please change the tiles partly so that it will look natural. ◆Please note that the product has the indigenous odor from its materials.				

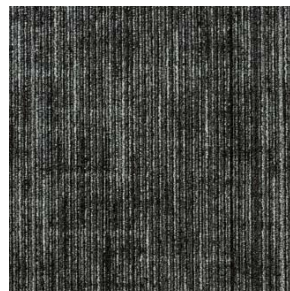
MADE IN JAPAN



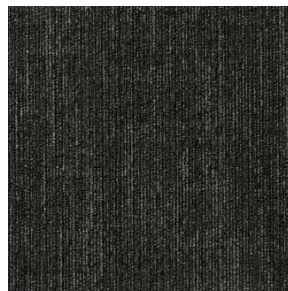
GA3661



GA3632



GA3633



GA3634



GA3636



GA3637



GA3639



GA-3600
(texture III)
 category: carpet tile

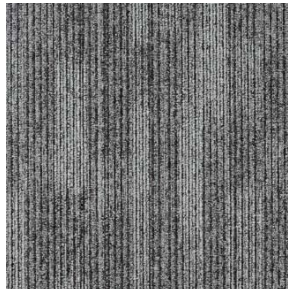


Carpet
Tile

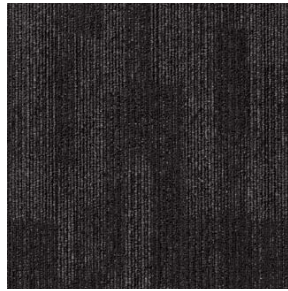
texture III



GA3661



GA3662



GA3663



GA3633