



MODERNO <GX-5600>

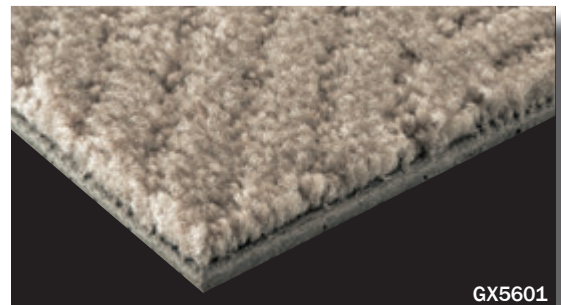
category: carpet tile

MODERNO's unique shading by cut and loop piles in muted colors will give an aesthetic impression.

Carpet

Composition	surface	BCF Nylon 100%	dyeing method of yarn	Solution Dyed	
	base fabric	Nonwoven Polyester	backing	PVC and Glass Fiber	
Specification	size	500mm x 500mm	overall thickness	9.0mm	
	pile height	H 6.0mm / L 4.0mm (cut and loop pile)			
	gauge	1/10	stitch	12.0	yarn weight (oz/sq.yd)
Packing	16pcs/box = 4m²/box				
Net Weight	20.8kg/box				
Performance	Critical Radiant Flux	(ASTM E648)	Class 1 Average CRF 0.45/cm² or higher		
	Smoke Density	(ASTM E662)	Less than 450		
	Flame-retardant	Fire Defense Law in Japan Authorized No.E0000137			
	Antistatic	Less than 1.0kv (JIS L 1021-16, at 23 degrees centigrade, 25%RH)			
	Stain-resistant	Stain Release			
	Formaldehyde Radiation	F☆☆☆☆ Interior-fabrics Performance Evaluation Conference Certified No. J04-30086			
Way of Installation	<div><div><div>↑</div><div>↑</div><div>↑</div><div>↑</div></div>Monolithic</div> or <div><div><div>↑</div><div>→</div><div>→</div><div>↑</div></div>Quarter Turn</div>				
Recommended Adhesive from TOLI	TOLI ECO GA Cement	(required quantity)	for steel or plastic sub-floor	40 to 60 gram/m²	
			for mortar and wood sub-floor	60 to 100 gram/m²	
Notes on Installation	◆Apply the adhesive on the whole surface of the sub-floor thinly and evenly. After drying, when the adhesive becomes translucent, install the tiles. Be careful not to put the tiles too tightly. ◆Occasionally the direction of cut-piles are partly broken in part, which looks like color shading. This is one of the characteristics of cut-pile carpets and not a manufacturing defect.				
Others	Please note that the product has the indigenous odor from its materials.				

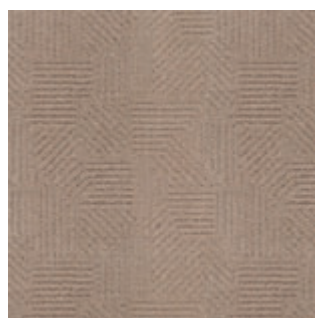
MADE IN JAPAN



GX5601



|| GX5604



|| GX5601



|| GX5623



|| GX5622



▲ GX5622