



NOCTURE <GX-8400>

category: carpet tile

Delicate texture is created by twisting different types of yarns. On the top of it, beautiful wavy pattern is overlapped.

Carpet
Tile

Composition	surface	BCF Nylon 100%	dyeing method of yarn	Solution Dyed	
	base fabric	Nonwoven Polyester	backing	PVC and Glass Fiber	
Specification	size	500mm×500mm	overall thickness	8.5mm	
	pile height	H 6.0mm / L 4.5mm (cut and loop pile)			
	gauge	1/10	stitch	12.0	yarn weight (oz/sq.yd)
Packing	16pcs/box = 4m ² /box				
Net Weight	20.2kg/box				
Performance	Critical Radiant Flux	(ASTM E648)	Class 1. Average CRF 0.45/cm ² or higher		
	Smoke Density	(ASTM E662)	Less than 450		
	Flame-retardant	Fire Defense Law in Japan Authorized No.E2150032			
	Antistatic	Less than 1.0kv (JIS L 1021-16, at 23 degrees centigrade, 25%RH)			
	Stain-resistant	Stain Release			
	Formaldehyde Radiation	F☆☆☆☆ Interior-fabrics Performance Evaluation Conference Certified No. J15-31028			
Way of Installation	Monolithic or Quarter Turn				
Recommended Adhesive from TOLI	TOLI ECO GA Cement	(required quantity)	for steel or plastic sub-floor	40 to 60 gram/m ²	
			for mortar and wood sub-floor	60 to 100 gram/m ²	
Notes on Installation	Apply the adhesive on the whole surface of the sub-floor thinly and evenly. After drying, when the adhesive becomes translucent, install the tiles. Be careful not to put the tiles too tightly.				
Others	<ul style="list-style-type: none"> Occasionally the direction of cut-piles are partly broken in part, which looks like color shading. This is one of the characteristics of cut-pile carpets and not a manufacturing defect. The position of wavy lines differs on a tile-by-tile basis. In case you do not feel comfortable about the floor after installation, please change the tiles partly so that it will look natural. Right after installation, the joints of the tiles could be outstanding. This will be recovered as the passage of time. Please note that the product has the indigenous odor from its materials. 				

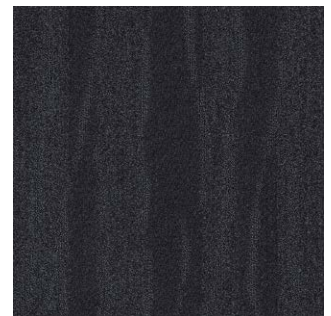
MADE IN JAPAN



GX8402



|| GX8401



|| GX8403



|| GX8402



|| GX8404

▲ GX8401