

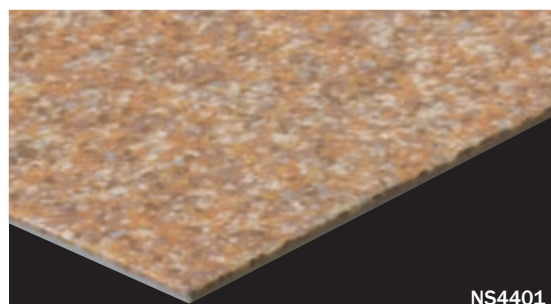
NS4400 AQUATREAD

category: slip-resistant/antibacterial/
heat-resistant vinyl sheet

Slip-resistant vinyl sheet with multiple functions. Its heat-resistance, water-drainage, and durability to dynamic load are most suitable for dry kitchens.

Specification	overall thickness	2.0mm	width x length	1820mm x 20m
	others	Antibacterial Finished / UV-Coated Surface		
JIS Registered No.	No. GB0507188 (JIS A 5705 Vinyl Sheet Flooring)			
Packing	20m/roll			
Net Weight	100.0kg/roll			
Recommended Applications	dry kitchens			
Recommended Adhesive from TOLI	dried mortar and concrete	Eco Royal Cement, Eco AR600 / (for heavy traffic area) Epo Gray S		
	humid mortar and concrete	Epo Gray ST, US Cement, US Cement (less-smelly)		
Welding	Welding rod for heat-welding (antibacterial finished) is available on a color-by-color basis. Seam sealer like TOLI Super Seam Liquid can work as well. Edges should be finished with sealing materials such as TOLI NS Seal.			
Notes on Installation	◆Seams should be heat-welded or finished with a seam sealing bond. ◆When you install 2 different sheets, each edge should be jointed at the seam. (Do not cut in the middle of the sheet.) ◆For one week after installation, direct sunlight, sudden change of temperature due to air conditioning, and water washing should be avoided. ◆Where you can expect the floor will get wet, NS4400 AQUATREAD should be installed in accordance with the method for humid mortar and concrete. Heat-weld or seal the joints, and finish the edges with NS Seal. ◆Please do not use the urethane adhesive other than US Cement, US Cement (less-smelly).			
Recommended Maintenance Wax from TOLI	T Wax (Non-shiny & Antibacterial), "HEALTH CARE COAT" from C×S Corporation (Shiny & Antibacterial)			
Custom Order	If you ask for higher slip resistance, "NS4400HR" with a harder surface is also available. For more information, please contact TOLI sales rep.			
Others	◆NS4400 AQUA TREAD is for indoor use. Do not install in exterior or semi-exterior places that are exposed to direct sunlight for a long time. ◆In case you install in the areas where you will have oily stains or a lot of water, you might not be able to expect sufficient slip-resistant performance. ◆When you finish the edge with TOLI NS Seal at the high temperature in summer, the bubble might be caused if it's too humid. ◆The dirt and stains will be more visible on the floor covering with lighter plain colors, compared to dark colors. Also they are more likely to stick with the deep-embossed surface than the flat surface. ◆Please be aware that some rubber casters might cause color-contamination. ◆When you apply the finish coating on the top, antibacterial wax should be chosen. Otherwise you cannot expect antibacterial performance. ◆Please note that the product has the indigenous odor from its materials.			

MADE IN JAPAN



NS4401



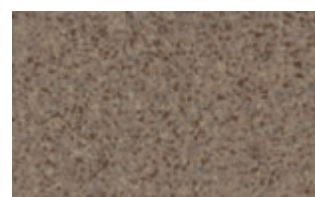
NS4401



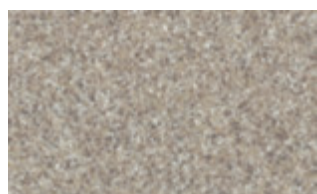
NS4402



NS4403



NS4404



NS4405



NS4406



NS4407



NS4408



NS4411



NS4412



NS4421



NS4422

◆ Water Drainage Performance

<Test method>

Sprinkle 200ml of water



Dewater by a rubber blade



Measure the residual water by
water absorption testing paper



NS4400 AQUATREAD has the surface structure that is well drained.

NS4400
AQUATREAD



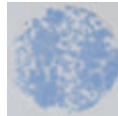
Residual Water
0.01g

NS800



0.92g

Poured Flooring



0.49g

◆ Heat Resistance (Oil)

<Test method>

Dip an absorbent cotton in salad oil at 185 degrees centigrade, lay it on the vinyl sheet, and check the surface.

● before testing

● after testing

NS4400 AQUATREAD



◆ Heat Resistance (Hot water)

<Test method>

Run the hot water at 90 degrees centigrade on the vinyl sheet for 24 hours, and check the surface.

● before testing

● after testing

NS4400 AQUATREAD



NS800



NS4400 AQUA TREAD is not affected by either oil nor hot water.

◆ Durability to Dynamic Load

NS4400 AQUA TREAD has excellent durability to dynamic load. It performs well in dry kitchens where you can expect the traffic of serving wagons and trolleys.

◆ Antibacterial Performance <in accordance with JIS Z 2801>

In JIS testing criteria, when the value is more than 2.0, the product has sufficient antibacterial property.

	Escheri- chia Coli	Staphy- lococcus Aureus	MRSA	O157	Vibrio parahaem- olyticus
NS4400 AQUA- TREAD	3.5	4.1	3.0	2.7	5.0

Conducted by BOKEN Quality Evaluation Institute

◆ Slip Resistance

<in accordance with JIS A 1454 (OY-PULL method), rubber shoes>

	C.S.R. value	
	dry	wet and dusty
2.0mm vinyl sheet	0.84	0.46
NS4400 AQUATREAD	0.72	0.53
NS4400HR (custom product)	0.84	0.55



▲ NS4407