



YUTAKA2000 <YU-2300> EARTH RHYME

(made-to-order product)

category: carpet tile

Refined pattern with a sense of depth by overlapping many lattice designs. Earth-look texture will create a unique rhythmic floor image, just like a rhyme.

Carpet
Tile

Composition	surface	BCF Nylon 100% (type 6)	dyeing method of yarn	Piece Dyed
	base fabric	Nonwoven Polyester	backing	PVC and Glass Fiber
Specification	size	500mm×500mm	overall thickness	7.3mm
	pile height	H 5.0mm / L 3.5mm (textured loop pile)		
	gauge	1/10	stitch	11.2
Packing	16pcs/box = 4m ² /box			
Net Weight	21.0kg/box			
Performance	Critical Radiant Flux	(ASTM E648)	Class 2 Average CRF 0.22/cm ² or higher	
	Smoke Density	(ASTM E662)	Less than 450	
	Flame-retardant	Fire Defense Law in Japan Authorized No.E2150288		
	Antistatic	0.08kV (AATCC 134)		
	Stain-resistant	Stain Release (Antifouling Finished)		
Way of Installation	Monolithic or Quarter Turn			
Recommended Adhesive from TOLI	TOLI ECO GA Cement (required quantity)	for steel or plastic sub-floor		40 to 60 gram/m ²
		for mortar and wood sub-floor		60 to 100 gram/m ²
Notes on Installation	Apply the adhesive on the whole surface of the sub-floor thinly and evenly. After drying, when the adhesive becomes translucent, install the tiles. Be careful not to put the tiles too tightly.			
Others	The stripes differ in position on a tile-by-tile basis so that they will not be exactly connected between the tiles (please refer to the installation image).			

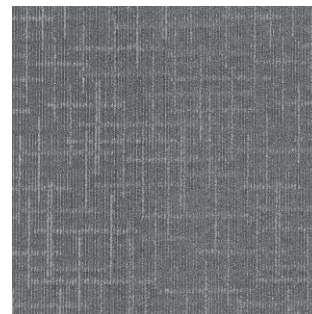
MADE IN JAPAN



▲ YU2321/YU2323



YU2322



YU2321



YU2322



YU2323