



GA-8700

category: carpet tile

GA-8700 is characterized by its unique 3-dimensional wavy pattern. Beautiful floor images can be created by monolithic installation.

Composition	surface	BCF Nylon 100%		dyeing method of yarn	Piece Dyed
	base fabric	Nonwoven Polyester		backing	PVC and Glass Fiber
Specification	size	500mm×500mm		overall thickness	7.0mm
	pile height	H 4.0mm / L 3.0mm (textured loop pile)			
	gauge	1/10	stitch	12.0	yarn weight (oz/sq.yd)
Packing	20pcs/box = 5m ² /box				
Net Weight	24.0kg/box				
Performance	Smoke Density (flaming)	(ASTM E662)	Less than 450		
	Flame-retardant	Fire Defense Law in Japan Authorized No.E0100029			
	Antistatic	Less than 1.0kV (JIS L 1021-16, at 23 degrees centigrade, 25%RH)			
	Stain-resistant	Stain Release			
	Formaldehyde Radiation	F☆☆☆☆ Interior-fabrics Performance Evaluation Conference Certified No.J10-30668			
Way of Installation	Monolithic or Quarter Turn				
Recommended Adhesive from TOLI	TOLI ECO GA Cement	(required quantity)	for steel or plastic sub-floor	40 to 60 gram/m ²	
			for mortar and wood sub-floor	60 to 100 gram/m ²	
Notes on Installation	Apply the adhesive on the whole surface of the sub-floor thinly and evenly. After drying, when the adhesive becomes translucent, install the tiles. Be careful not to put the tiles too tightly.				
Others	<ul style="list-style-type: none"> ◆The stripes differ in position on a tile-by-tile basis so that they will not be exactly connected between the tiles (please refer to the installation image). ◆Difference of pile heights may cause a shadow on the joints of tiles, which is an optical illusion, not a manufacturing defect. ◆Please note that the product has the indigenous odor from its materials. 				

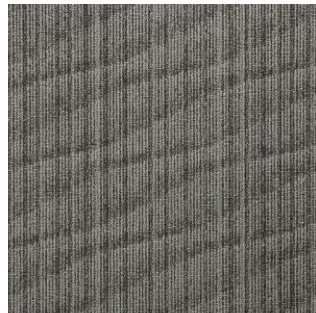
MADE IN JAPAN



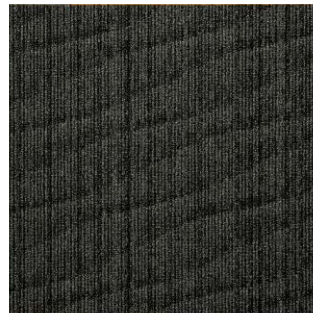
▲ GA8701



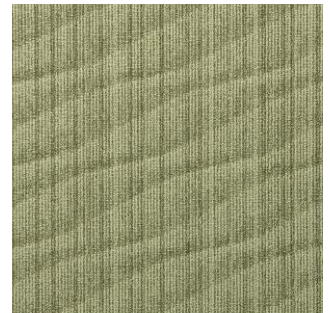
GA8701



GA8702



GA8703



GA8707



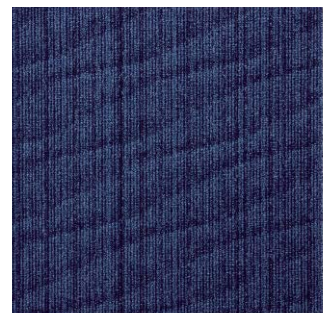
GA8704



GA8705



GA8706



GA8708