



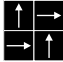
# YUTAKA1000

## <YU-1100>

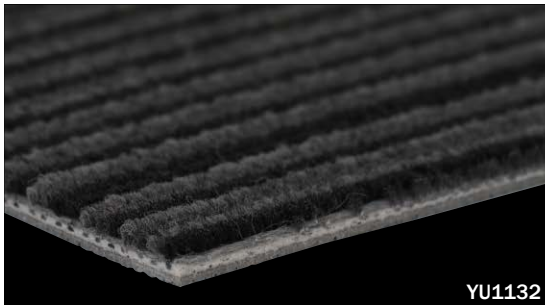
(made-to-order product)

category: carpet tile

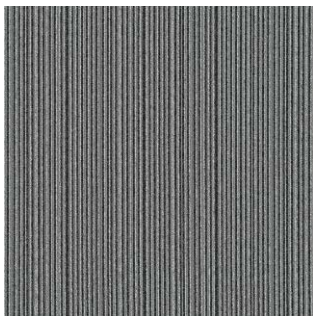
Japanese traditional "Shima Moyo" (striped pattern) of YU-1000 can create a basic modern floor image in quarter turn installation.

Composition	surface	BCF Nylon 100% (type 6)	dyeing method of yarn	Piece Dyed
	base fabric	Nonwoven Polyester	backing	PVC and Glass Fiber
Specification	size	500mm×500mm	overall thickness	6.0mm
	pile height	3.0mm (level loop pile)		
	gauge	1/10	stitch	14.0
Packing	16pcs/box = 4m <sup>2</sup> /box			
Net Weight	21.0kg/box			
Performance	Critical Radiant Flux	(ASTM E648)	Class 2 Average CRF 0.22/cm <sup>2</sup> or higher	
	Smoke Density	(ASTM E662)	Less than 450	
	Flame-retardant	Fire Defense Law in Japan Authorized No.E2120129		
	Antistatic	1.1kV (AATCC 134)		
	Stain-resistant	Stain Release (Antifouling Finished)		
Way of Installation	 Quarter Turn			
Recommended Adhesive from TOLI	TOLI ECO GA Cement (required quantity)		for steel or plastic sub-floor	40 to 60 gram/m <sup>2</sup>
			for mortar and wood sub-floor	60 to 100 gram/m <sup>2</sup>
Notes on Installation	Apply the adhesive on the whole surface of the sub-floor thinly and evenly. After drying, when the adhesive becomes translucent, install the tiles. Be careful not to put the tiles too tightly.			
Others	<ul style="list-style-type: none"> <li>Due to striped designs, the crossover point of joints may appear to be misaligned. This is an optical illusion, not a manufacturing defect.</li> <li>Please note that the product has the indigenous odor from its materials.</li> <li>When you store the products, do not pile up more than 6 boxes for a better preservation.</li> </ul>			

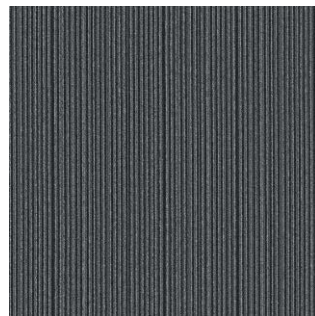
MADE IN JAPAN



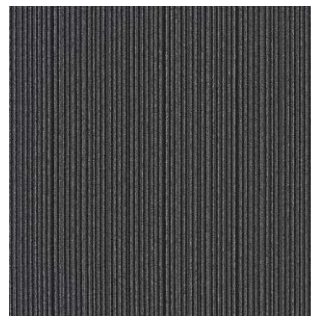
YU1132



YU1121



YU1122



YU1132



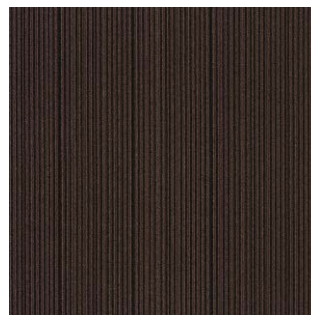
YU1128



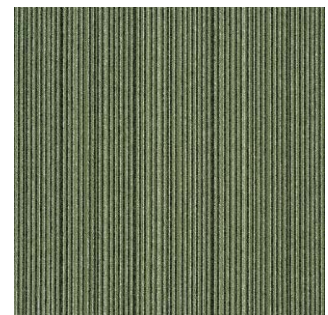
YU1126



YU1124



YU1125



YU1133



# YUTAKA1000 <YU-1100>

(made-to-order product)

category: carpet tile



Carpet  
Tile



▲ YU1121/YU1128/YU1308



▲ YU1128



▲ YU1121/YU1122/YU1132