



**LONG LIFE
DESIGN**



GA-100W (RANDOM HERRING)

category: carpet tile

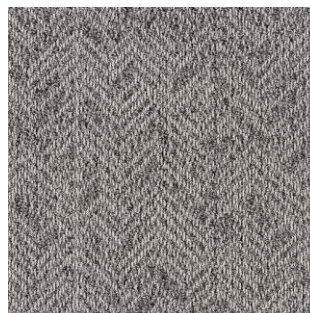
Sophisticated herringbone pattern with an authentic texture. Inspired by the woven fabric made by mixing various type of colored yarns.
**GOOD DESIGN LONG LIFE DESIGN
AWARD-winning product in 2015.**

Composition	surface		BCF Nylon 100%		dyeing method of yarn		Piece Dyed	
	base fabric		Nonwoven Polyester		backing		PVC and Glass Fiber	
Specification	size		500mm×500mm		overall thickness		6.8mm	
	pile height		H 5.0mm / M 4.0mm / L 2.5mm (textured loop pile)					
	gauge		1/10	stitch		11.0	yarn weight (oz/sq.yd)	16.5
Packing	20pcs/box = 5m ² /box							
Net Weight	25.5kg/box							
Performance	Critical Radiant Flux		(ASTM E648)		Class 2 Average CRF 0.22/cm ² or higher			
	Smoke Density		(ASTM E662)		Less than 450			
	Flame-retardant		Fire Defense Law in Japan Authorized No.E2200142					
	Antistatic		Less than 1.0kV (JIS L 1021-16, at 23 degrees centigrade, 25%RH)					
	Stain-resistant		Stain Release					
	Formaldehyde Radiation		F☆☆☆☆ Interior-fabrics Performance Evaluation Conference Certified No. J20-31580					
Way of Installation	<div><div><div>↑</div><div>↑</div><div>↑</div><div>↑</div></div><div>Monolithic</div><div>or</div><div><div><div>↑</div><div>→</div><div>→</div><div>↑</div></div><div>Quarter Turn</div></div></div>							
Recommended Adhesive from TOLI	TOLI ECO GA Cement		(required quantity)		for steel or plastic sub-floor		40 to 60 gram/m ²	
					for mortar and wood sub-floor		60 to 100 gram/m ²	
Notes on Installation	Apply the adhesive on the whole surface of the sub-floor thinly and evenly. After drying, when the adhesive becomes translucent, install the tiles. Be careful not to put the tiles too tightly.							
Others	◆In Monolithic installation, when the color difference between the tiles stands out or the joints are visible, please switch the tiles partly. ◆To have a natural image after installation, stripes are intentionally inserted in the design at regular intervals, which is not a manufacturing defect. In case you do not feel comfortable about the floor after installation, please change the tiles partly so that it will look natural. ◆Please note that the product has the indigenous odor from its materials.							
Custom Order	All the standard colors of GA-100W can be made with Nano Clean finish (patent-obtained special stain release) on a made-to-order basis. For more information, please contact TOLI sales reps.							

MADE IN JAPAN



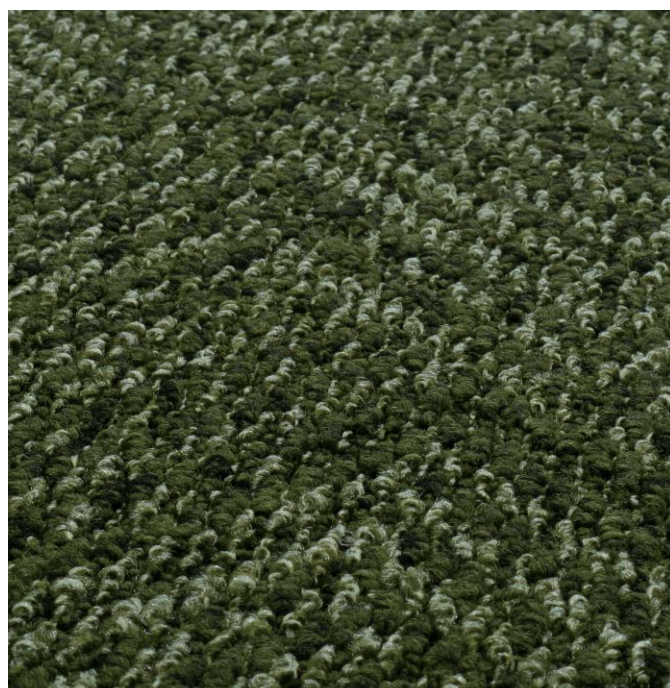
GA1651W



GA1651W



GA1654W



GA1653W



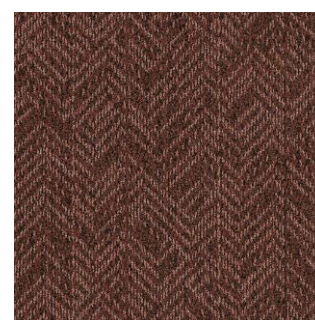
GA1652W



GA1655W



GA1653W



GA1656W



GA-100W (RANDOM HERRING)

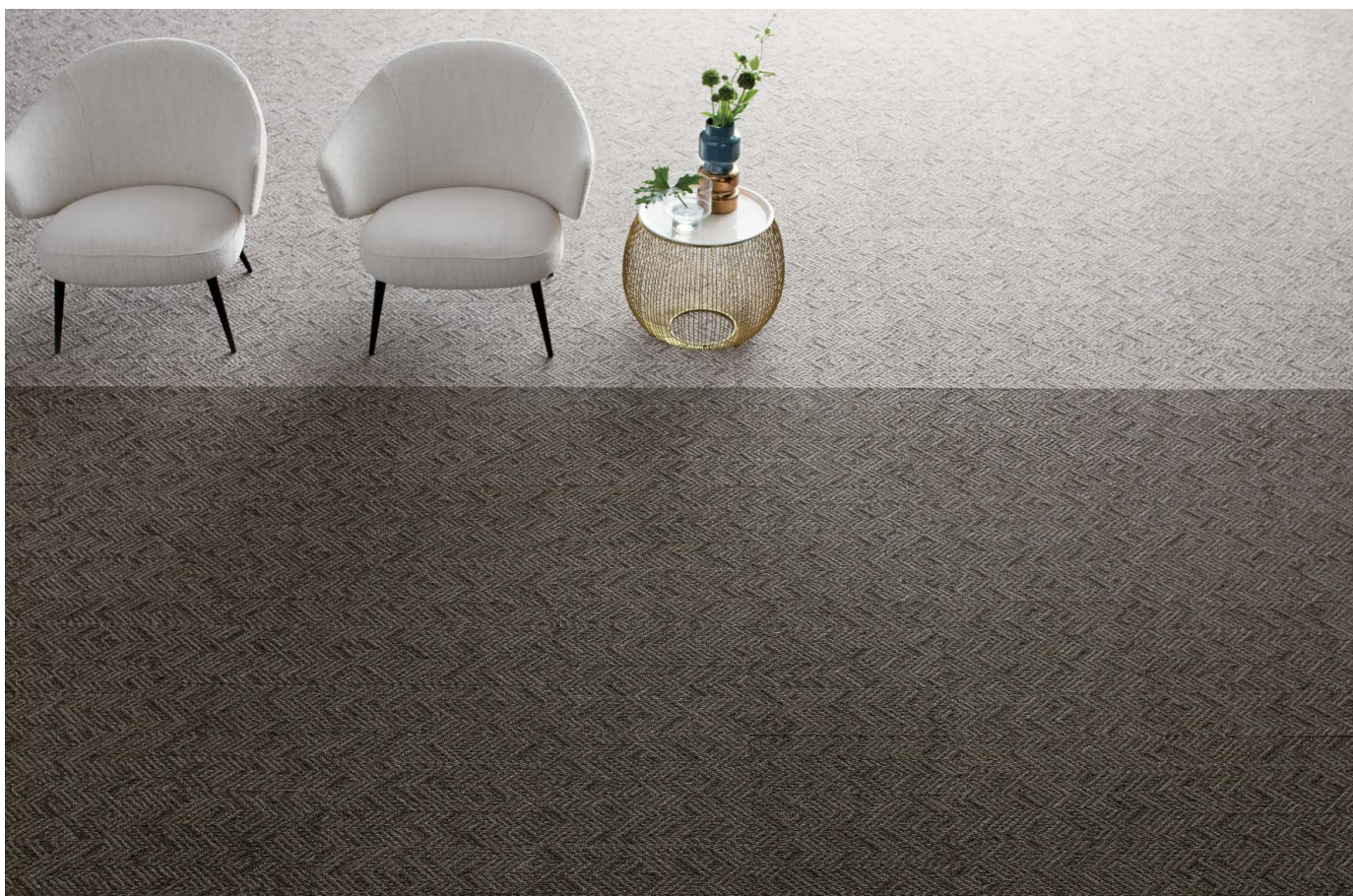
category: carpet tile



Carpet
Tile



▲ GA1651W/GA1656W/TTN3118 (LL FREE 50 NW-EX · page 320)



▲ GA1654W/GA1655W